

Western Learning Federation

Riverbank School Prospectus



Learning together to be the best we can



Together we **grow,**
learn and **achieve.**



Welcome from the Executive Headteacher



As Executive Headteacher of the Western Learning Federation, I'm delighted to welcome you to our prospectus which will provide you with information about our school, which is part of the Western Learning Federation.

The Western Learning Federation is unique as we are the only special school federation in Wales. The federation brings together three schools - all unique in their own right all working together with shared values and a determination to provide outstanding education to pupils with additional learning needs.

Whilst Riverbank, Ty-Gwyn and Woodlands all have their own school visions and identities, there will be a direct link to those of the Western Learning Federation and as such, these school visions must and are considered a part of the vision of the Western Learning Federation.

The Western Learning Federation promotes all schools as 'Schools as Learning Organisations'. The foundations are built on a shared vision of 'learning together to grow and achieve'. The federation provides excellence in governance and creates an environment supporting continuous learning for all staff where collaboration is promoted in a nurturing and ambitious way. There is a culture and ethos of enquiry, innovation and exploration, with a focus on the collation and exchanging of learning knowledge.

Our organisation is committed to learning with and from the external environment as a person-centred learning organisation. The purpose of the Western Learning Federation and the role that schools play is clear; the organisations support a culture of self-reflection, continuous feedback and drive for growing learning leadership. The federation is underpinned by a set of values that define the culture of the three federated schools.

We operate with one governing body with a subcommittee structure that governs over all three schools. Whilst schools have their own identity, they are all operated through one Executive Headteacher and one governing body. This allows the schools to benefit from economies of scale, shared professional learning and shared pupil learning experiences.

The Western Learning Federation is about creating something that is unique and complements the excellent pedagogy that exists within each school setting. Our vision rightly inspires, but also complements and develops the outstanding innovation and practice currently in place at Riverbank, Ty Gwyn and Woodlands. Best wishes

Mr Wayne Murphy

Executive Headteacher
Western Learning Federation



Rachel Faulkner
Deputy Executive Headteacher

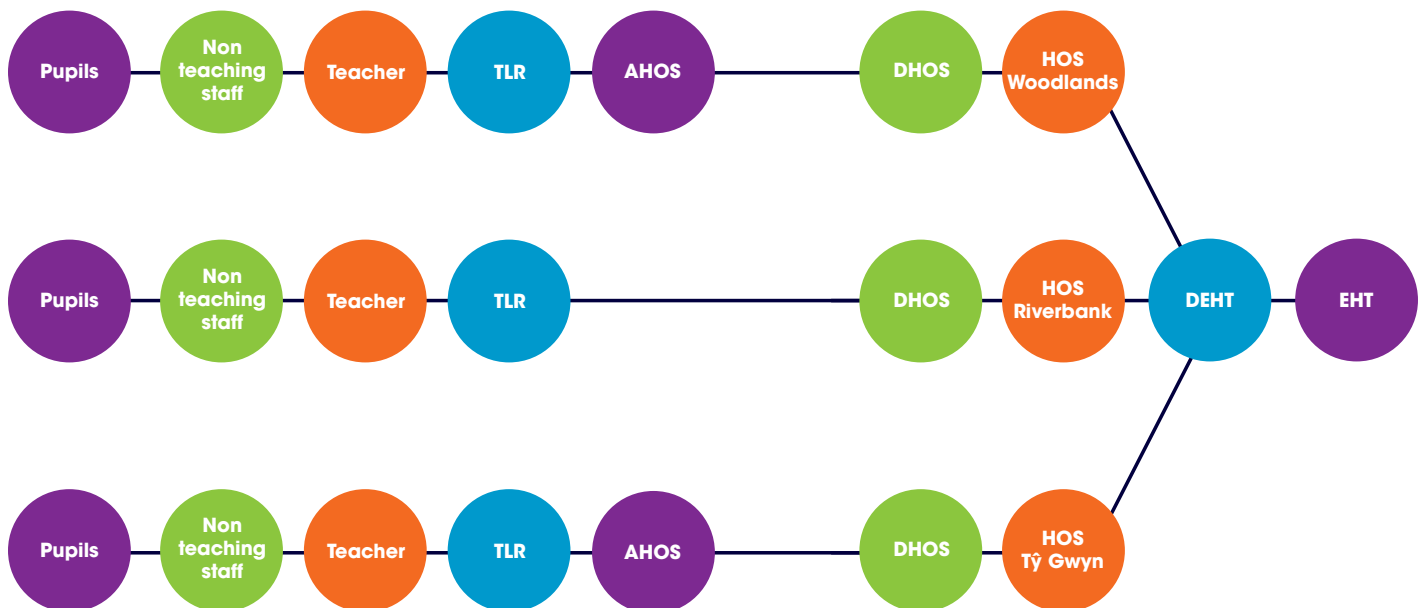
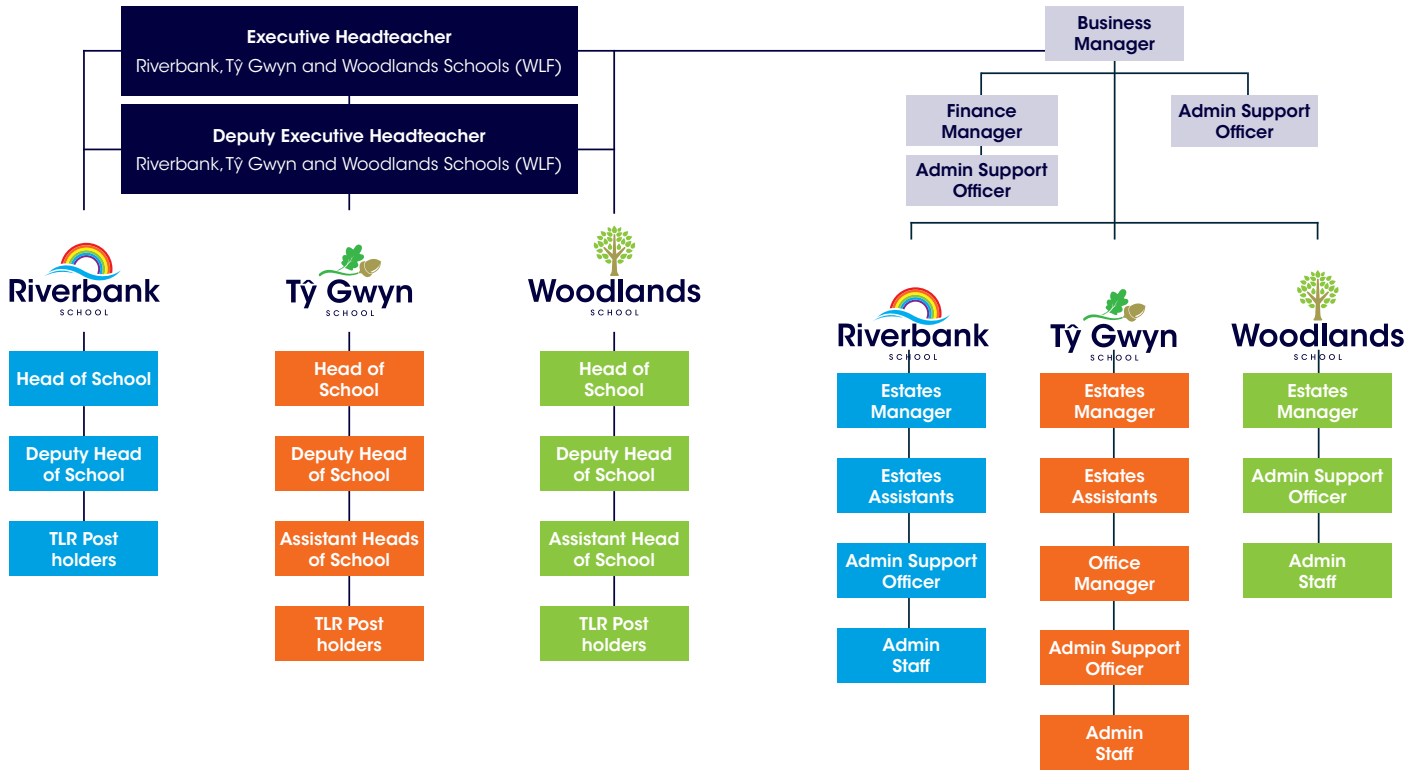


Amie Lucas
Head of School, Riverbank



Lauren Pope
Deputy Head of School, Riverbank

Organisation Structure





The Values and Principles

Working together to grow, learn and achieve is our mission statement that we originated from Welsh Government vision for schools as learning organisations. We have embedded this mission statement into our vision, values and principles and it is the values that have shaped our strategic plan as we move through the decade since federating.

Our Mission Statement

Working together to grow, learn and achieve.

Our Values

- We celebrate our differences.
- We have a shared sense of belonging.
- We play, laugh, smile and celebrate success.
- We have a positive attitude.
- We learn from experiences to develop life and independent skills.
- We follow our dreams and aspirations.
- We care for our own and wider environment.
- We improve quality of life.

Definition

Values One's judgement of what is important in school life.

Principles Morally correct behaviour and attitudes.

Our Principles

Honesty

Responsibility

Positivity

Trust

Empathy

Patience

Respect

Kindness



Riverbank School



Learning together to be the best we can

Welcome

Starting a new school can be an exciting experience but it can also raise many questions and anxieties. I hope that the information in this booklet can go some way to addressing your queries and anxieties. Please do not hesitate to contact me if you have any further questions.

With your help and co-operation I will do my best to make your child's time at Riverbank happy, rewarding and successful.

Riverbank School is an LEA maintained day special school for children aged 4 – 11, with additional learning needs, specifically Severe Learning Difficulties.

A very flexible approach is needed because children are often absent from school due to illness, medical appointments and hospitalisation and this affects delivery of the planned curriculum, timetables and progress through topics.

Flexibility is also needed to accommodate the interruptions in classroom routine necessary for toileting, care and therapy, much of which is carried out in the classroom setting.

Class time is divided into group and individual sessions and subjects are taught through a cross-curricular topic approach. Each pupil has an individual programme of work to enable them to access the curriculum at their personal level.

We strive to enable the pupils to reach their full potential in all areas, educational and social.



Amie Lucas

Head of School, Riverbank
Western Learning Federation



Riverbank Vision Statement

We aim to achieve, through purposeful partnerships, a high-quality education for all pupils.

The purpose of Riverbank School is to create a professional environment in which pupils can receive their curriculum entitlement. We have high expectations and hope to enable pupils to achieve the following goals:

- High achievement for all, regardless of ability, gender, class & ethnicity
- To learn how to learn and to learn how to play
- To gain the best possible level of independence appropriate to their age and ability
- To be able to make appropriate, informed choices
- To be aware of danger and the need for safety at all times
- To be able to communicate in a range of settings and for different audiences
- To be able to behave and respond appropriately in a range of different situations, with regard for the feelings and well-being of others
- To celebrate success and be aware of their own strengths and skills, leading to raised self-esteem.

In order to achieve these goals, we begin with the individual needs of the child. These needs encompass the whole child – not just the academic, but also the social, behavioural, medical and moral needs.

- We ensure that our curriculum is delivered at the appropriate level to meet these needs.
- We believe that it is not simply a case of what we deliver, but also the way in which we deliver it.
- We aim to use pupils' strengths, the strengths of adults around them and the environment to enhance and provide opportunities for learning and success.
- Through the assessment of our pupils' needs, abilities and levels of attainment, we record and report on progress and inform our planning of the curriculum.
- We monitor and evaluate the pupils' learning and our teaching in order to continuously strive to raise standards.

The school day

- 🕒 The school day starts at 9.10 a.m. and ends at 3.10 p.m.
- 🕒 Pupils have a 15 minute break in the morning.
- 🕒 Lunch break is between 12.00 noon to 1.15 p.m.



At Riverbank We Strive to:

- Create a happy, caring and secure atmosphere, thus providing the best possible learning environment in which a child can become confident, self-disciplined, adaptable and sensitive to the needs of others, with a caring and responsible attitude towards people and the environment
- Help children adapt from a home environment to a group environment, making the transition as pleasurable as possible
- Help children understand the world in which they live and give them the skills and knowledge to direct their own learning, make choices and live as independently as possible
- Help children to obtain as high a level in their education as is possible
- Encourage children to develop an awareness of their own and others needs, to express their feelings appropriately and to cope with different experiences
- Assist parents in recognising and accepting their child's additional learning need and to play a full role as partners in the assessment and education of their child
- Create links between schools
- Establish a community in which staff and pupils alike are developing and working together, supporting and helping each other to create a stimulating, positive and enthusiastic atmosphere in which all are helped to overcome any difficulties and problems
- Provide a multi-disciplinary environment where all can work effectively in the best interests of the child
- Function as an advisory resource and meeting centre for families of children with additional learning needs.

The Curriculum

We adopt an active learning approach to the curriculum wherever possible.

Our curriculum is:

- Purpose driven
- Relevant to each child's needs and reflects their interests
- Determined by the individual child's level of development
- Practical and first hand
- Stimulates children to think for themselves and develop a sense of responsibility
- Allows children to make their own choices and decisions, when appropriate
- Encourages the use of all senses to investigate, explore and imagine
- Provides opportunities for communicating, questioning, answering and problem solving
- Recognises the importance of play
- Is regularly assessed to inform planning

Religious Education

At Riverbank we aim to promote among pupils a clear set of personal values and beliefs and respect and understanding for those with different beliefs. We want the pupils to gain a sense of security and trust and to express this through kindness to others. The school has no affiliation to a particular religious denomination. All religions and their communities are treated with respect and sensitivity and we value the links, which are and can be made between home school and a faith community.

Any parent wishing special consideration to be paid to cultural or religious requirements should discuss this with the Head of School.



Assemblies

We start each week with an assembly that focusses on the United Nations Rights of the Child. A whole school "Special Mention" assembly is held every Friday to celebrate our weekly achievements.

Relationship and Sexuality Education

Relationship and sexuality education forms part of our personal and social health education. It is taught within a relevant and appropriate context depending on the age and maturity of the child.

Welsh

Basic Welsh is taught at Riverbank, where appropriate and the use of incidental Welsh is greatly encouraged. The importance of Welsh culture is highlighted through the medium of art, music and stories. Celebrations around St. David's Day are an annual focus encouraging children to investigate Welsh culture.

PE/Sport

A wide range of sporting activities are available at Riverbank. These include cricket, football, dance, judo, boccia and rugby.

Educational Visits

Our educational visits are related to our curriculum and can either be on foot or on the school minibus. Parental permission for local trips is requested when your child starts school.

Individual Development Plan

All pupils will have a person centred meeting each year to review the individual development plan where we will invite parents and carers to attend as well as multi agency professionals if required.



Home/School Communication

We believe it is very important to have good communication and partnership between home and school. This is made more difficult because most of the children come to school by bus or taxi. Parents can ring or call at the school at any time, but please be aware that classroom staff may need to continue with the activities they are involved in and arrange to call you back.

It is helpful if parents can give prior notice of an intended visit as they might arrive when their child's class is involved in activities out of school.

All classes use the Seesaw app to communicate with you about your child's day and pass on any necessary bits of information. Staff will upload an annotated photograph at least three times a week. Parents are also encouraged to use Seesaw to message class staff as it is of the highest importance that this communication is a two-way process. It is extremely important that staff should know about any change in home circumstances or issues, which might affect the way a child feels or acts in school.

It is also good to have bits of exciting or interesting news about any outings. The class team will also telephone you regularly for an informal chat on a regular basis. We also use the Seesaw app to send pictures to you of the children at work.

Newsletter

A weekly newsletter is sent home with pupils via Seesaw and email and is also published on our website. This contains details of the work the children have been doing in school, notices of forthcoming events and reminders of important dates.

Accidents and Injuries at Home

If an accident, injury or bruise occurs to your child whilst they are at home please inform the school the next day.

We have a duty of care to investigate any unexplained injury we observe on a pupil.

“The school has a **family atmosphere** and everyone is **warm and welcoming.**”

PARENT / CARER



Parental Involvement

We strongly believe in the involvement of parents in the child's learning, as we like to work in partnership to reinforce new skills learned. Parents can help at home particularly with encouraging their child to practise new skills. Parents will be updated on each half term's topic, value and focus UNCRC right so that they can be involved in and build on their child's learning at home.

Further activities for home can be suggested or provided by class teachers if parents and staff feel that this is appropriate.

School Council

We try to encourage the children to take on responsibilities when they are ready. The School Council is composed of a variety of children. The class teachers suggest the names of prospective School Council member and the children are asked if they feel they would like to be involved. The School Council meets once every half term. The School Council is able to instigate real change around the school and can refer items of concern to the Federated Governing Body.

Aspire Outreach

Riverbank School delivers the Aspire outreach service. It was set up to give help and advice to mainstream schools that have children who have been identified as having learning difficulties.

Since its inception it has worked in many mainstream primary schools and pre-school settings. We work primarily with children in Early Years settings (nursery and reception classes).

The service can provide:

- Advice to adults working with the child
- Identification of possible strategies for working with the child
- Initial practical support regarding the implementation of strategies
- Advice on differentiation
- Advice on classroom organisation and positioning
- Advice on setting specific individual targets and how to review

The service is not able to:

- Make recommendations in terms of additional staffing allocation
- Make recommendations in terms of placement
- Break copyright or licensing laws to provide schools with resources

Aspire Outreach is only accessed through referrals from the Early Years Forum.

Scan the QR Codes below to view our ESTYN results.



Riverbank
SCHOOL
Learning together to be the best we can



Tŷ Gwyn
SCHOOL
Learning to achieve



Woodlands
SCHOOL
Learning for Living

School Uniform



Please order your child school uniform here -
<https://www.safewearuk.com/school-uniform-childrenswear>

Safewear UK
Unit 1
Lewis Road
Cardiff
CF24 5EB

T: 0800 1975257
E: sales@safewearuk.com



Everyone is
friendly, people
are nice and **easy**
to talk to, always
welcoming.



**Western
Learning
Federation**



Together we learn, grow and achieve

RIVERBANK SCHOOL

Mr Wayne Murphy - Executive Headteacher
Miss Rachel Faulkner - Deputy Executive Headteacher
Mrs Amie Lucas - Head of School

Ffordd Vincent/Vincent Road, Trelái/Ely, Caerdydd/Cardiff, CF5 5AQ

T: 029 2056 3860

E: riverbanksp@cardiff.gov.uk

www.riverbankspecialsch.co.uk

WESTERN LEARNING FEDERATION

Mr Wayne Murphy - Executive Headteacher
Miss Rachel Faulkner - Deputy Executive Headteacher

Ffordd Vincent/Vincent Road, Trelái/Ely, Caerdydd/Cardiff, CF5 5AQ

E: westernlearningfederation@cardiff.gov.uk

www.westernlearningfederation.co.uk